

LOUVER WINDOWS



DURALCO 
PREMIUM ALUMINUM PRODUCTS FROM AUSTRALIA

Louver Windows

We think that Breezway Louver Windows are the best type of window available. They're stylish, versatile, energy efficient and totally customizable. We hope that by the time you've finished reading through this brochure, you'll agree with us.

Through this brochure you'll find:

- Ideas on how Breezway Louver Windows can enhance your home,
- Information on the energy efficiency of Breezway Louver Windows and
- Guidance through the various customizing options available.

They don't make louvers like they used to

Louver windows have changed significantly since we began manufacturing them in the late 1940's, but they are still a practical and stylish window choice.

Key features of modern Breezway Louver Windows:

- Hurricane rated for wind and water to ensure maximum performance.
- Tight sealing due to the patented 'living hinge' and drainage channel design.
- Energy rated to meet building codes.
- Improved security available with easily fitted security screens.
- Manufactured exclusively from non-corrosive materials.
- Ideal window option for replacing old jalousies in high-rise Condo's.
- Tempered glass is available from our local factory in Honolulu to offer added safety for building occupants.
- Each window is made to order, allowing the widest choice of customizing options.
- Breezway Louvers with the Stronghold System pins louver blades in place to provide extra strength and safety in buildings and lanai enclosures.



DURALCO 
PREMIUM ALUMINUM PRODUCTS FROM AUSTRALIA



Maximum Ventilation

Louver blades fully open. This means they provide very little resistance to the air entering through the window opening. In effect, you get twice as much ventilation as you would through a same sized sliding window.

The benefits of Breezway Louver Windows over other window types don't end with ventilation. When open, they don't project far beyond the wall so it does not impede paths of travel. They can be left open in gentle rain. And the surfaces can be cleaned from inside the building (handy in multi-story buildings.)

Free air
in every room
of your home



Houses heat up. Sun on the roof and before long you've got a hot box. A hot box that's often much hotter inside than the air outside.

To counter this you could install air conditioning or alternatively you can keep your home comfortably cool, almost every day of the year, simply by opening it up.

Breezway Louver Windows allow you to do this with stylish design and elegant simplicity. More than any other window option they allow you to fully embrace the cool change. To invite in the refreshing breezes during or after a rain shower.

Essentially, Breezway Louver Windows help you to create a living space that works with nature rather than against it.

A light and airy place where, through louvers wide open, you can hear the lovely morning birds and smell the flowers.

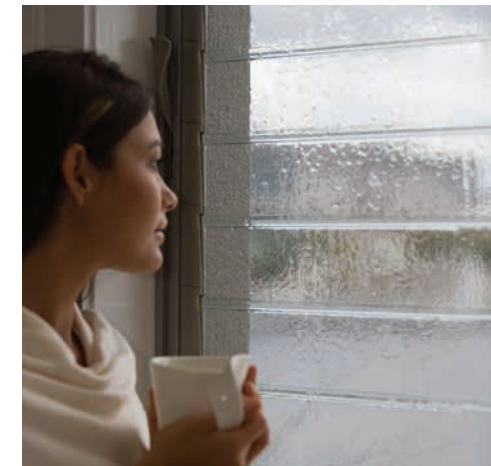
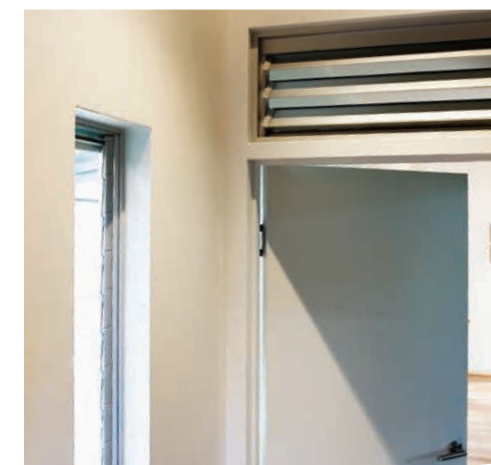
This is what we mean by free air. And you can have it in every room of your home.



Tip: Use wood or aluminum blades in areas of the home to block out the hot sun in summer.



Let's look at the bedroom



Internal Louvers

To really effectively cool a room, you need to let cool, fresh air in and also let warm, stale air out. This can be tricky if a room has only a single outside wall.

Breezway Louver Windows can be an ideal solution. They offer maximum ventilation for their size. And they are flexible enough to fit any space available, be it tall or short, narrow or wide.

Wood, aluminum or frosted glass blades give privacy and the tight sealing of Breezway Louvers means that conversations can remain private.

Now the blank wall above bedroom doors, in the corner of the room, or down low behind a desk can be transformed into a clever cooling breeze-way.

What every bedroom needs is a breath of fresh air. And the best way to get lots of fresh air inside is with Breezway Louver Windows.

Concerned about wind and rain? The patented 'living hinge' design of Breezway Louver Windows ensures that, when fully closed, they seal tight to provide superior wind and water performance.

Importantly, Breezway Louver Windows can be easily screened, so you and your family can sleep tight at night.

Tip: For those with limited space for a window (eg. in a small bedroom) Breezway Louver Windows provide good ventilation through a much smaller window opening.



Did you know

Generating the electricity to run a single average living room sized air conditioner can cause the release of around 5 tons of greenhouse gasses per year.

Lounging about



Breezway Louver Windows in the living room should be required.

Okay, we're a little biased about that. But think about it. Is there a better, cheaper or more stylish way to have complete control of the air flowing through your living area?

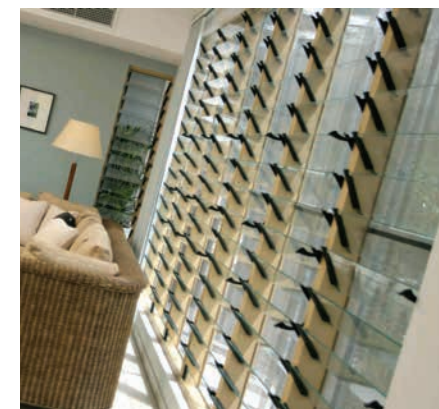
We think not. And most leading architects and designers agree.

Worried about mosquitoes or other flying insects? Insect screens are available, inside or outside.

Breezway provides three color options and allows you to match your frames to your handles and clips.

Nosey neighbors? The choice of wood and aluminum blades means you can have your fresh air and your privacy, too.

Have a good look at the enormous bank of louvers in the main photo and tell us you wouldn't want a living area like that in your home.



Create extra living space

Are you looking for an innovative way to enclose an outdoor area to make it more functional, regardless of the time of year?

Breezway Louver Windows can be used to create extra living space and extend your outdoor time. Designed for tough outdoor conditions, Breezway Louvers open fully to allow fresh air in, yet seal tight to ensure protection from the elements.

Create your own enclosed space that is positioned to capture trade winds and use glass louver blades to shield you from rain while enjoying scenic views. Alternatively, you can use Breezway Louvers with wood or aluminum blades to create a privacy screen or to shield the sun while still obtaining fresh air.

Tip: Breezway Louvers are also a great option for stairways, closets, adjacent to landings, at corridor ends, in bathrooms, in garages and up high in loft areas to vent and replenish the air you breathe.



Choice of glazing to suit your environment

Breezway Louver Windows have a wide variety of glazing options to suit various climatic conditions.

In warm climates, a primary consideration is to reduce the amount of hot sunlight that enters the home through the windows. Tinted glass and wood blades are great options.





Did you know

Many houses in the USA are experiencing problems with mold and mildew due, in part, to insufficient ventilation.

Steam free



Steam is good for locomotives, but not in your bathroom. Install exhaust fans if you wish, but really, the best option is to include louvers to let in fresh air and light.

Architects and designers are now putting Breezway Louver Windows (with wood or aluminum blades for privacy) behind towel rails to speed up the drying process.

Our louvers in laundry rooms also make sense.

By the way, when a tropical storm is blowing outside, it's good to know that Breezway Louver Windows are the most wind and rain resistant product of its kind anywhere in the world.

This is due to our patented 'living hinge' mechanism which ensures an extremely tight fit between the louver clips and channels to resist water and air leakage.





If you can't stand the heat get some louvers in the kitchen

It goes without saying that a set or two of Breezway Louver Windows are a wise inclusion for every kitchen. They'll get rid of the smells and help dissipate the heat of your oven or stove.

The stylish handles on our louvers can be positioned to the left, to the right, up high, or down low. This makes louvers easy to open in hard to reach places.

As you know, hot air rises. So if you have a high ceiling in your kitchen, you might consider putting some Powerlouver Windows up high to help keep the air cool.

Light. Air. Space.

Breezway Louver Windows are the perfect option to allow natural light, fresh air and a greater sense of space into any environment, especially when entertaining in the kitchen. Open up and enjoy the breeze!



The Breezway Powerlouver™ Window

Personal jet packs, holidays on the moon, windows that automatically open to cool your home, then close up in conjunction with other household equipment when you leave the house. The first two are still a way in the future, but Breezway Powerlouver Windows are available now!

Designed to reach heights of up to 8' 6-3/4" and 1'3" wide, the Breezway Powerlouver can be operated by the Powerlouver™ Apptivate™ Control Unit which allows control via a touch sensitive wall plate, remote control via a Powerlouver™ App for smartphones and tablets, or automatic operation in response to temperature or timer events.

Powerlouver Windows can even be wired into smart automation systems to allow control along with other automated building products and automatic operation in response to various sensors and inputs.

Live somewhere really cold, or super-hot? No need to worry, they've been tested to perform in temperatures from 32degrees right up to 140degrees and can even handle 90% humidity.

Best of all, the motors are concealed within the framing system, so there are no ugly external motors, bars or connecting rods.



The Breezway Powerlouver™ Window Motor is concealed within the head of the window frame.

Energy Efficient

When fully open, the Powerlouver Window allows 90% natural ventilation through the entire window opening which helps keep the building at a comfortable temperature at any time of day without the need for artificial cooling systems. This is in comparison to common powered awning windows that only provide between 12-30% air depending on the wind direction.

Add strength and safety to your building

Breezway Louver Windows with the new Stronghold System have been specifically designed to achieve blade retention. The system allows you to gain the benefits of full ventilation whilst providing added safety to the entire window opening. To achieve this, a high strength acetal pin is inserted through the inside face of the Stronghold clip, through the bearing and a hole that is drilled into each end of the glass or aluminum blade.

In multi-story applications or a lanai enclosure, extra living space can be created to ensure fresh trade winds are captured and enjoyed all year round.

Breezway Louvers with the Stronghold System will withstand even the harshest weather conditions, making them a perfect alternative to shutters. The Window System can also be screened and offers privacy options when using aluminum blades.

Available within the Breezway ios or Makani Window Systems complete with 4" or 6" glass or aluminum blades.



TIP: The Stronghold System is a great, innovative window option for replacing old-style Jalousies in high-rise apartments.



The pin secures the blade to the clip from inside.



Stronghold™ Window System

Tempered safety glass is available from our local factory in Honolulu. Up to five times stronger than standard glass, you can now provide further protection and safety for your home and commercial projects.

Screening options for your window

Locally manufactured in Hawaii, the ios Window offers inside or outside screening options. The ios Window is an innovative design that conforms to the performance requirements of AAMA standards and the amended International Building Code.

It is the perfect aluminum framing option for bringing natural light and fresh air into your home, office, resort, government building or any other project.

Looking for a slimmer frame?

New generation Breezway Louver Windows are also available in the Makani Window when screening is not required. Fully assembled and ready for installation, the Makani Window System is a sleek alternative for the old fashioned jalousies. Locally manufactured from strong, corrosion resistant materials, the new Makani Window System is a fully assembled framing option that replaces the Breezway Strip Hardware offer.

The window can now be easily installed into any project where fresh air and energy efficient control of the building environment is important.



ios[®] System

The ios Window System is built for strength and durability, manufactured exclusively from stainless steel, aluminum and UV-stabilized industrial strength plastics to ensure years of trouble-free operation.

When open, Breezway Louver Windows capture cooling trade winds just as effectively as old style Jalousie Windows, and when closed, they seal tightly to provide superior wind and water performance.

The ios Window System is an innovative design that provides inside or outside screening options to homeowners.



Makani[™] Window System

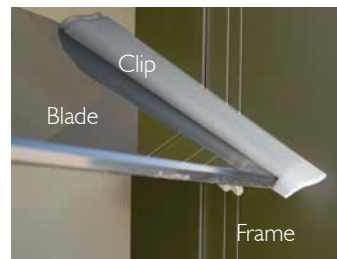
The Makani Window System is a good option for single wall construction and improves installation time. High quality polyester powder coating or 25 micron anodized finishes ensure a strong, durable framing system for years of trouble-free operation in a tropical, coastal environment.

Louver Window Selection Guide

This section will help you choose the right combination of Breezway Louver Windows for any residential or commercial application. Just follow these 7 simple steps.

Step 1 Select your choice of frame

When selecting your frame think about the design, colors, maintenance level and energy requirements of your home. There are three frame colors to choose from, with options to suit varied applications. Ask your Breezway Preferred Dealer to show you the choices available.



Aluminum
Aluminum frames are low maintenance and available in three colors; white, clear anodized and dark bronze anodized.

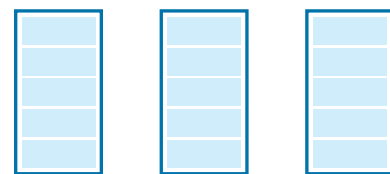


Insect Screens
Insect screens can be fitted to the inside or outside of Breezway ios Window Systems or other compatible systems. Please specify your requirements during frame selection.

Step 2 Consider the design of your Breezway® Louver Windows

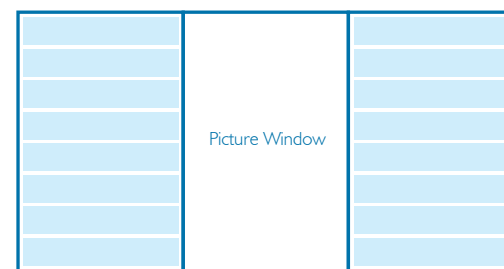
Breezway offer a range of sizes and shapes to provide greater flexibility within the home. Breezway Louvers can also be used within internal walls as room dividers to improve cross ventilation and building comfort through better airflow.

Multiple Louver Windows



Make the most of natural air and reduce the need for air conditioning.

Louver/Picture Window Combination



To frame a view and gain good airflow.

Step 3 Select your louver blade

With Breezway Louver Windows you can choose blades that suit your surroundings. For a plantation or contemporary beach house look try wood blades. Glass blades let the outside in and aluminum blades add a sharp modernity to your home, are easy to maintain, and offered in multiple colors.

Added strength and safety

Breezway Louvers with the Stronghold System are designed to mechanically retain blades so you can gain the benefits of full ventilation and safety in single and multi-story applications.



Thick or thin? Inside or outside?

Breezway Louver Windows are available with two standard blade heights: 4" and 6". Can be used internally to better ventilate your home, on lanai's to create privacy or as a feature wall to maximize fresh air and catch that special view.

Hot or Cold Climate?

Your choice of blades can significantly improve the energy efficiency of your windows. Tinted glass blades or solid wood blades help to reduce solar heat gain which is beneficial in hot climates.



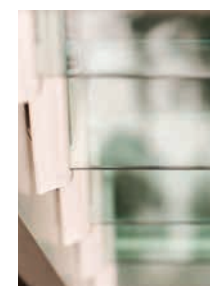
Western Red Cedar

Wood blades let the breeze in and create privacy at the same time while reducing the amount of heat passing through the window. All blades can be stained to blend in with your home.



Aluminum

Aluminum blades are virtually maintenance free, can't rust and never need painting. Our aluminum blades are offered in our standard color finishes including Decowood for that eye catching timber look. High performance aluminum finishes are also available for harsh coastal or industrial environments.



Glass

Obscure, etched, gray, bronze, tempered for extra strength and safety, or good old sparkling clear glass! As long as it's 1/4" thick, almost every type of glass can be incorporated in a Breezway Louver Window.



Tempered Safety Glass

Up to five times stronger than standard glass, tempered safety glass is available from our factory in Honolulu. If breakage occurs, the glass breaks into very small, square edged pieces removing the danger from shards of broken un-tempered glass.

Step 4 Select a control method

Whether you prefer pulling a handle or using a switch, Breezway has a louver window perfect for you. Consider the functionality of your window or the needs of the user when choosing a control method that will best suit the needs of each window.



Powerlouver™ Window

This award winning product is controlled by the Apptivate Control Unit, Powerlouver App or Building Management System.



Standard Handle

Designed to fit the contours of the human hand for easy use.



Ring pull Handle

For up-high, out-of-reach louver placement and operated by a pole.



Low Profile Handle

Designed for bi-fold and some sliding doors. The unique shape provides a functional fit that won't get in the way of blinds.



Slide Handle

Easily operate your louvers when using the ios Window System with an inside screen installed.



Inside Screen Handle

For manual operation when screens are positioned to the inside of the louvers.

Cool air within easy reach

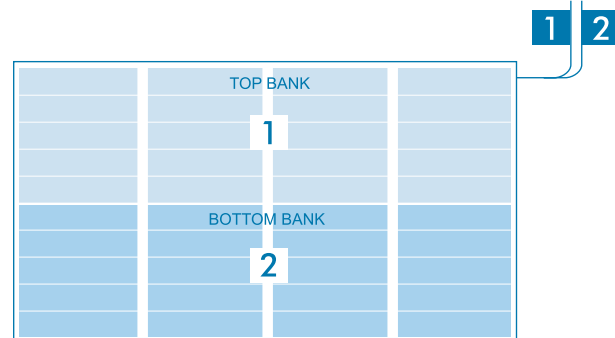
Breezway gives you the design flexibility to have your handles where you want them. Each handle can operate a maximum of 9 blades and can be positioned on the left or on the right, up high or down low. Alternatively, you can choose the Powerlouver Window with no handles.

The Powerlouver Window

Powerlouver Windows that are 2-9 blades high are wired such that the entire window opens and closes simultaneously. Powerlouver Windows that extend 10-18 blades high are wired such that all blades in the top halves of all the bays form a bank and operate simultaneously and all the blades in the lower halves of all the bays form a second bank and operate simultaneously. However, various switching and wiring configurations allow multiple windows to be controlled simultaneously or independently depending on individual preferences.

For convenient and versatile operation, the Powerlouver Apptivate Control Unit and Powerlouver App are available for the Powerlouver Window. The window can be opened and closed with a single touch of a button or stopped in any intermediate position depending on the amount of airflow required by the user.

Single or dual channel models of the Apptivate Control Unit can easily control the Powerlouver. The unit can automatically respond to an in-built temperature sensor and has Bluetooth compatibility for operation by smartphones and tablet devices. The Powerlouver App provides remote control operation of more than 10m and allows the naming of Apptivate Control Units for ease of identification. Powerlouver Windows can also be automatically operated in response to temperature and pre-set timers by the smartphone or tablet. 'Night mode' adjusts the brightness of LED lights overnight to minimize potential sleep disruptions.



Step 5 Select your colors*

Breezway offers three standard colors; white, clear anodized and dark bronze anodized for Breezway Louver Windows that can be color matched to your handles and clips to provide consistency in your design.



* The colors and textures represented in this leaflet may vary under different light conditions and are indicative only.

Step 6 Choose additional security options

Insect or security screens are available to further protect your building from insects or vandals.



Outside Screen



Inside Screen

Louver Window Standard Heights

| Powerlouver™ Window System heights <small>(Insect screens can be fitted to the outside of this size frame)</small> | | | ios® Window System | | Makani™ Window System heights | | Galleries/Strip Hardware only including Weatherstrip | |
|---|------------|-----------|--------------------|------------|-------------------------------|------------|--|------------|
| No. of Blades | Height 6" | Height 4" | Height 6" | Height 4" | Height 6" | Height 4" | Height 6" | Height 4" |
| 2 | 14-19/32" | - | 13-5/8" | - | 13-19/32" | - | 13" | - |
| 3 | 20-1/8" | 14-7/32" | 19-1/8" | 13-7/32" | 19-3/32" | 13-3/16" | 18-1/2" | 12-19/32" |
| 4 | 25-5/8" | 17-3/4" | 24-21/32" | 16-25/32" | 24-19/32" | 16-23/32" | 24-1/32" | 16-5/32" |
| 5 | 31-5/32" | 21-5/16" | 30-5/32" | 20-5/16" | 30-1/8" | 20-9/32" | 29-17/32" | 19-11/16" |
| 6 | 36-21/32" | 24-27/32" | 35-21/32" | 23-27/32" | 35-5/8" | 23-13/16" | 35-1/32" | 23-7/32" |
| 7 | 42-5/32" | 28-3/8" | 41-3/16" | 27-13/32" | 41-5/32" | 27-3/8" | 40-9/16" | 26-25/32" |
| 8 | 47-11/16" | 31-15/16" | 46-11/16" | 30-15/16" | 46-5/8" | 30-29/32" | 46-1/16" | 30-5/16" |
| 9 | 53-3/16" | 35-15/32" | 52-7/32" | 34-7/16" | 52-5/32" | 34-7/16" | 51-9/16" | 33-27/32" |
| 10 | 58-11/16" | 39-1/32" | 57-23/32" | 38-1/32" | 57-11/16" | 38" | 57-3/32" | 37-13/32" |
| 11 | 64-7/32" | 42-9/16" | 63-7/32" | 41-9/16" | 63-3/16" | 41-17/32" | 62-19/32" | 40-15/16" |
| 12 | 69-23/32" | 46-3/32" | 68-3/4" | 45-1/8" | 68-11/16" | 45-3/32" | 68-1/8" | 44-1/2" |
| 13 | 75-1/4" | 49-21/32" | 74-1/4" | 48-21/32" | 74-7/32" | 48-5/8" | 73-5/8" | 48-1/32" |
| 14 | 80-3/4" | 53-3/16" | 79-3/4" | 52-7/32" | 79-23/32" | 52-5/32" | 79-1/8" | 51-9/16" |
| 15 | 86-1/4" | 56-23/32" | 85-9/32" | 55-3/4" | 85-7/32" | 55-23/32" | 84-21/32" | 55-1/8" |
| 16 | 91-25/32" | 60-9/32" | 90-25/32" | 59-9/32" | 90-3/4" | 59-1/4" | 90-5/32" | 58-21/32" |
| 17 | 97-5/16" | 63-13/16" | 96-5/16" | 62-27/32" | 96-1/4" | 62-25/32" | 95-21/32" | 62-7/32" |
| 18 | 102-13/16" | 67-3/8" | 101-13/16" | 66-3/8" | 101-25/32" | 66-11/32" | 101-3/16" | 65-3/4" |
| 19 | - | - | 107-5/16" | 69-29/32" | 107-9/32" | 69-7/8" | 106-11/16" | 69-9/32" |
| 20 | - | - | 112-27/32" | 73-15/32" | 112-25/32" | 73-7/16" | 112-7/32" | 72-27/32" |
| 21 | - | - | - | 77" | - | 76-31/32" | - | 76-3/8" |
| 22 | - | - | - | 80-9/16" | - | 80-1/2" | - | 79-29/32" |
| 23 | - | - | - | 84-3/32" | - | 84-1/16" | - | 83-15/32" |
| 24 | - | - | - | 87-5/8" | - | 87-19/32" | - | 87" |
| 25 | - | - | - | 91-3/16" | - | 91-5/32" | - | 90-9/16" |
| 26 | - | - | - | 94-23/32" | - | 94-11/16" | - | 94-3/32" |
| 27 | - | - | - | 98-9/32" | - | 98-7/32" | - | 97-5/8" |
| 28 | - | - | - | 101-13/16" | - | 101-25/32" | - | 101-3/16" |
| 29 | - | - | - | 105-11/32" | - | 105-5/16" | - | 104-23/32" |
| 30 | - | - | - | 108-29/32" | - | 108-27/32" | - | 108-9/32" |
| 31 | - | - | - | 112-7/16" | - | 112-13/32" | - | 111-13/16" |

Visit our Showrooms!

Granada Showroom

#60 Granada Street, Villa Ortigas II, Quezon City
+632 8725 8160

Fort Showroom

MC Home Depot, 32nd St., Cor. Bonifacio Boulevard,
Bonifacio Global City, Taguig City
+632 8816 0158

Ortigas Showroom

CW Alabang Home Depot Westgate, Alabang Zapote Road Cor. Filinvest Ave
Alabang, Muntinlupa City
+632 8771 1591

Alabang Showroom

CW Home Depot Ortigas I Dona Julia Vargas Avenue, Cor. Meralco Ave.
Pasig City
+632 8633 5539

This chart indicates standard window heights corresponding to the number of full blades used in standard Breezway Louver Window frames. For window heights differing from our standard dimensions, a fixed blade can be added to accommodate the difference.

Galleries/Strip Hardware can be fitted to a number of different window fabricator's frames, please contact your fabricator for their standard window heights.